

Pellet Sieve Type FPSA

The Prater/Satake Pellet Sieve has evolved from over 70 years experience of the Prater Industries Incorporated Group of Companies in Chicago, USA. Satake Australia manufactures this well proven unit under licence to Prater Industries.

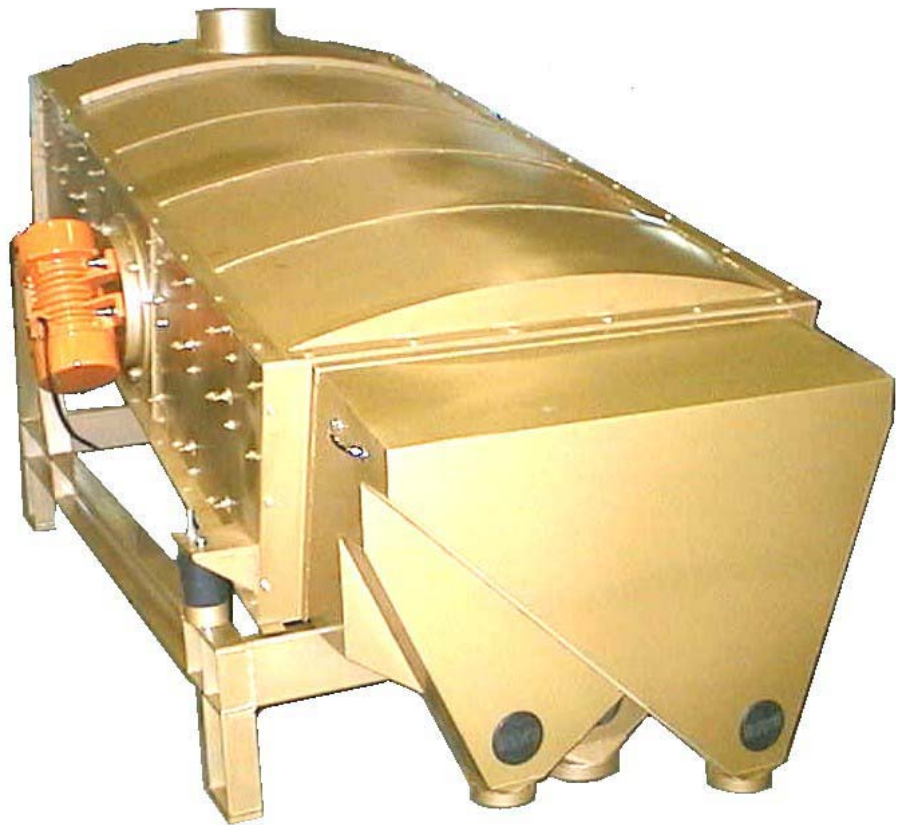
The sieve is also capable of duties other than pellet screening where scalping and sizing of coarse and fine particles are required.

The unit is designed, depending on the number of decks, to remove oversize pieces, pellets, crumbles and fines.

Being manufactured primarily in mild steel, the machine is comprised essentially of two sections:

A Stationary frame designed for mounting onto your existing steelwork supports the main dust tight sieve body which houses a set of screen assemblies.

The main sieve body is fitted inside with one, two or three decks of screens mounted one on top of the other. Each screen assembly is mounted on leak proof slide rails and secured in position by full length deck clamps. The screen apertures are selected on the duty of the machine.



The body is freely supported by robust rubber isolators assemblies located at each corner which are designed to isolate the vibrating action of the sieve body.

Motion is imparted by two vibratory motors mounted on adjustable support plates which are fitted on either side of the sieve body. The angle of the sieve body and vibratory motors can be adjusted for optimum throw angle and the stroke can be adjusted by the weight setting on the motors themselves.

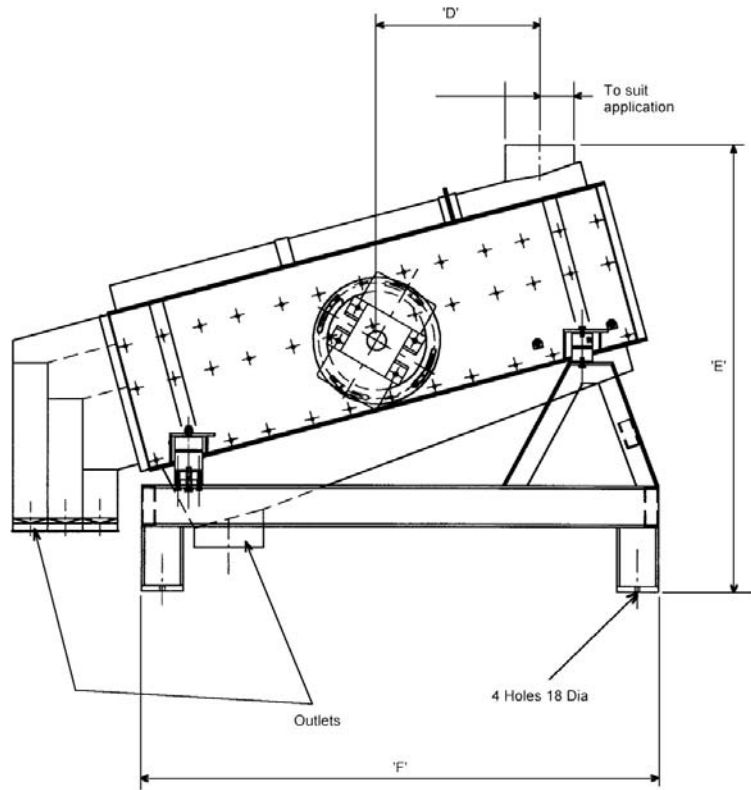
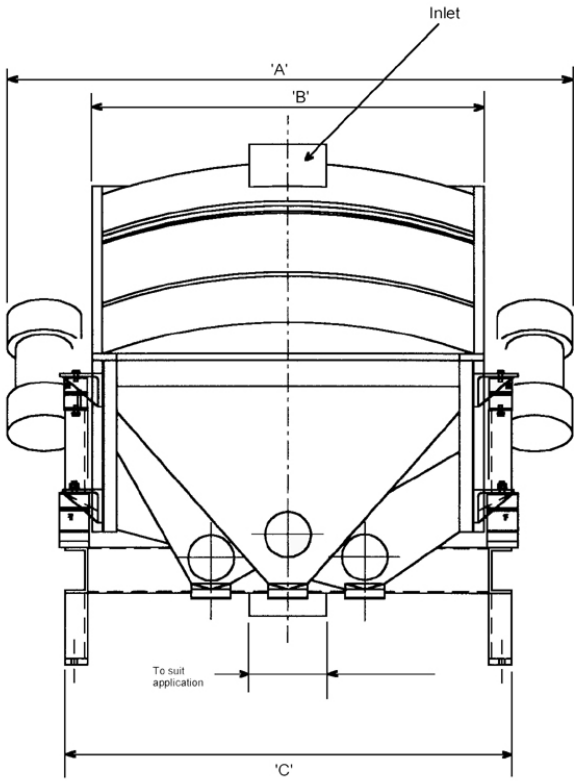
The unit incorporates inspection covers on the outlet section.

Machine Size	Capacity*
1800 x 900	8 Tonnes per hour
2000 x 1200	15 Tonnes per hour
2400 x 1200	20 Tonnes per hour

The above capacities are based on 4mm pellets and they vary depending on application.

Notes:

1. Allow 1750mm distance for screen removal at rear.
2. Three deck model shown
3. Planning in drawing available for each size
4. Sieve shown at 15°



Machine Size	A'	B'	C'	D'	E'	F'
1800 x 900	1563	995	1225	657*	1400*	1930
2100 x 1200	1845	1227	1455	680*	1700*	2170
2400 x 1200	2092	1524	1685	985*	2100*	1900*
*May vary depending on application						

OPTIONAL EXTRAS

Stainless steel construction
 Special inlets and outlets to suit low head room etc.
 Quick release sieves
 Quick release top
 Ball cleaners
 Split screens
 Diverter valves to suit outlet configuration

KEY FEATURES

- High capacity with power requirements
- Outlet running with low maintenance
- An efficient and adjustable sieving action

NOTE:

All Satake/Prater machines are the subject of a continuous development programme and, as a result their specifications may change and differ in detail from those outlined in the data sheet.