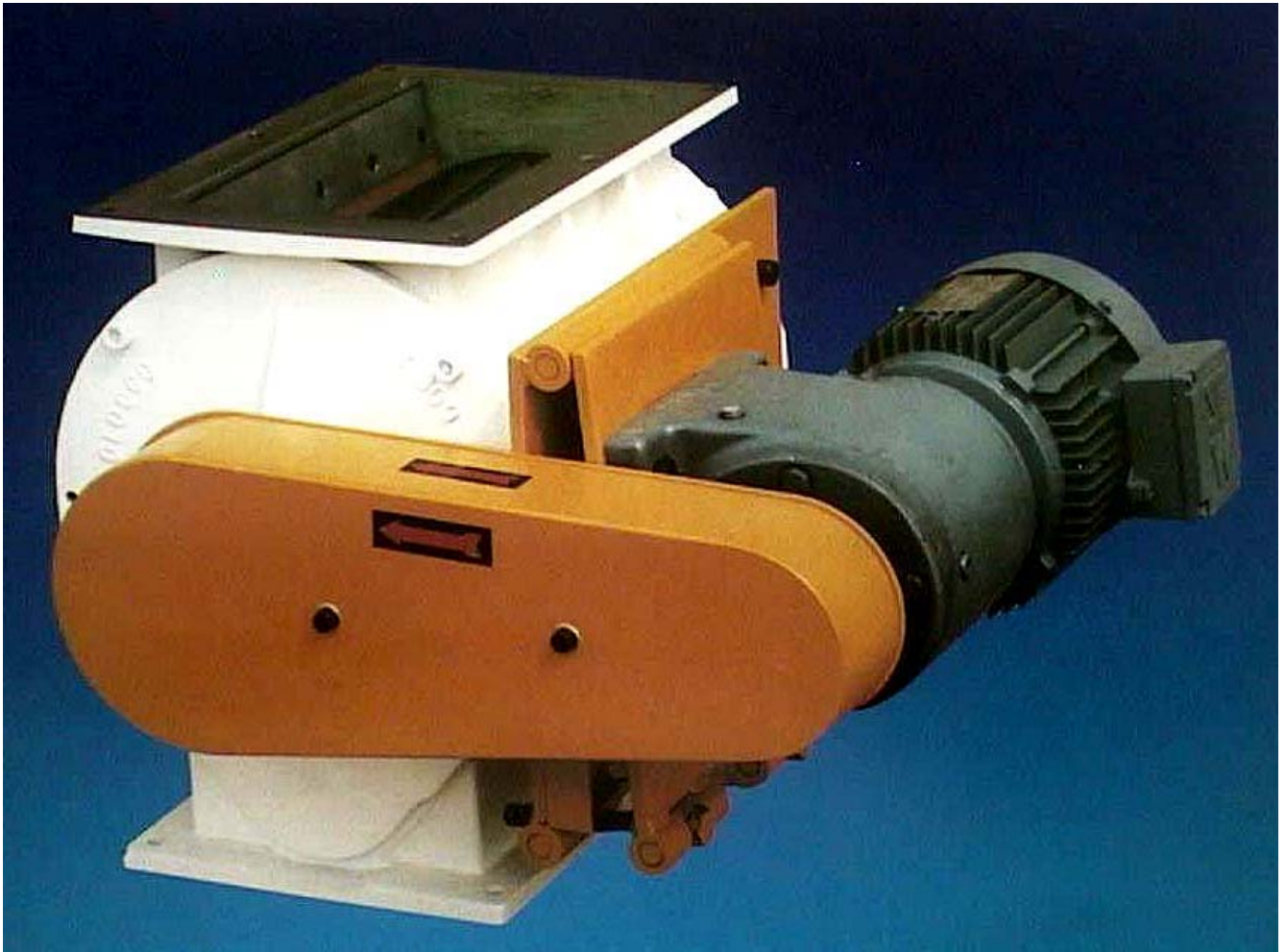
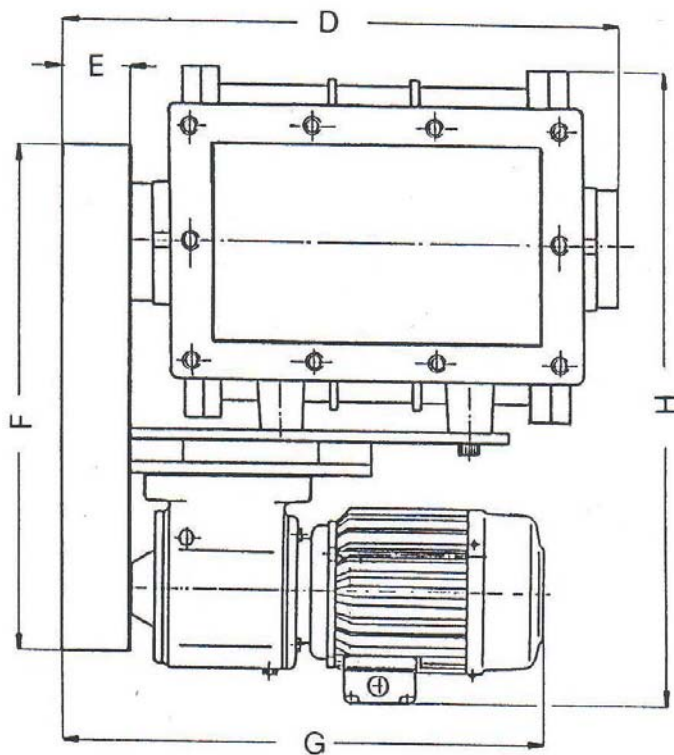
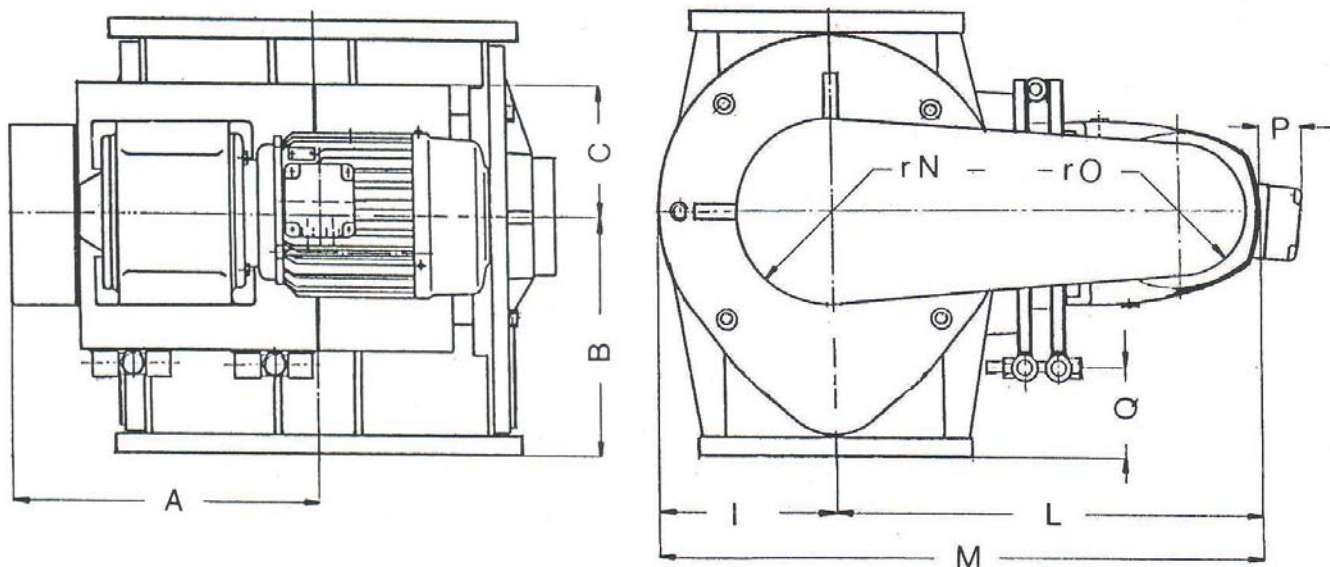


RS Rotary Valve



The drop through rotary valve type “RS” is particularly suitable for the feeding and pneumatic conveying of products in grain and powder and it can be used in all industrial sectors involving pneumatic conveying lines with average/low pressure. In fact, for the particular construction, the several types of rotors and the minimum tolerances it ensures excellent airlock and flowing in pneumatic conveying lines. This valve has been studied to fit any type of product or special requirements of the customer. Manufactured in cast iron, nickel or chromium plated cast iron and stainless steel AISI316, it is supplied with bare shaft or motorisation consisting in variable speed gearmotor or gearmotor and complete drive with chain guard according to CE rules.



TIPO TYPE TYPE TYP	A	B	C	D	E	F	G*	H*	I	L*	M*	rN	rO	P	Q
RS180	252	140	100	418	83	450	492	485	115	325	440	87	62	45	23
RS230	290	174	120	483	94	530	510	540	140	355	495	132	67	45	36
RS270	315	213	130	533	94	550	510	578	158	375	533	132	67	45	68
RS300	353	248	140	608	94	594	554	671	181	440	621	147	67	50	80
RS350	452	290	150	778	123	704	600	745	215	475	690	177	87	55	125
RS450	535	338,5	200	943	123	754	676	920	275	590	865	152	87	55	153
RS600	634,5	415	225	1147	123	782,5	653	1056,5	339,5	636	975	152	87	81	175

* These measures might change according to the type of the gearmotor